

ENVIRONMENTAL DUE DILIGENCE MADE ACTIONABLE

Pivvot spatial data helps firms quickly identify critical site risks, such as floodplains, wetlands, and endangered species—all from your desktop in minutes, not hours.

With Pivvot, you can visualize and understand the protected lands or environmentally sensitive areas surrounding your proposed project site. The platform offers detailed reporting features, crossing and impact reports, landowner contact lists, and permitting requirements, empowering you to quickly generate findings that can be shared with regulatory bodies, engineering teams, and key stakeholders.



CLEAR VISIBILITY INTO SITE CONSTRAINTS AND SUITABILITY

- Pivvot's environmental screening provides defensible crossing reports and impact analysis, enabling you to compare sites side by side to identify and rank your top options
- Visualize risks before breaking ground, like natural barriers and protected areas such as wetlands, water bodies, and critical habitat surrounding a project site
- Upload your own assets or access curated data layers to visualize your project's constraints and possibilities
- Request specific data packages that plug into your GIS, CAD, or analytics systems, extending the value of Pivvot across your internal workflows
- Generate permit reports, parcel reports, and constraint visualizations to understand suitability
- Smart Parcels identify adjacent and nearby parcels owned by the same landowner to facilitate your land search
- Export landowner contact lists to expedite landowner outreach and negotiations

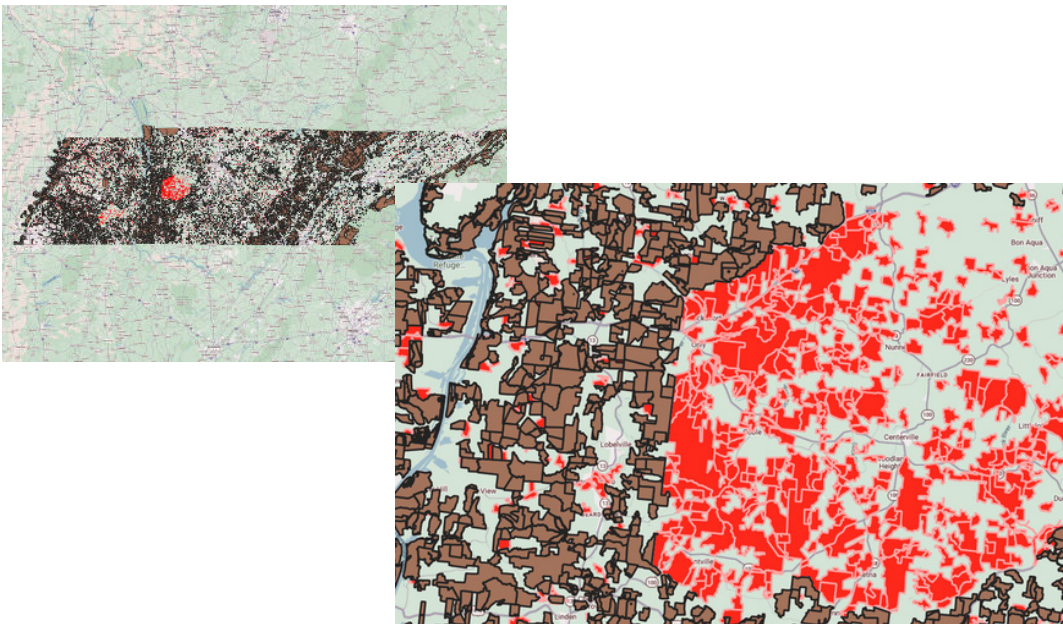


“Using Pivvot, we have confidence in the data that shows what red flags are present and can adjust our plans and budget or quickly evaluate alternative sites for our project instead.”
- *Environmental Scientist*



ENVIRONMENTAL SCREENING BUILT TO STAND UP TO REVIEW

- Pivvot's reporting tools help you quickly evaluate risks, justify decisions, and keep projects moving
- Identify and plan for potential permit requirements with protected land, property parcel, wetland, and societal data
- Visualize jurisdictional boundaries, floodplains, environmental justice data, easements, and more
- Pivvot identifies applicable data sets within your project boundary to generate a federal permits list
- Understand ownership conflicts, environmental constraints, and geotechnical risks earlier in your project timeline and process



Graphic: Smart Parcels example shows parcels 200 acres or greater owned by same entity:

- Brown = Tax map parcels 200 acres or greater
- Red = Smart Parcels (merged tax map parcels owned by the same entity that combined is 200 acres or greater)
- Green = areas less than 200 acres

PIVVOT PLATFORM FEATURES

- ✓ Collaboration Map
- ✓ Pivvot Data Layers On-Demand
- ✓ Upload Project Sites and Asset Data
- ✓ Generate Crossing & Impact Reports
- ✓ Load Third-Party Geospatial Data
- ✓ Customized Reporting
- ✓ Data (and Metadata) Download

PIVVOT SITING & ROUTING ANALYTICS

- ✓ Data Driven Analytics
- ✓ Download Elevation Profiles
- ✓ Generate Suitability Surface
- ✓ Generate Comparison Reports
- ✓ Generate Impact & Crossing Reports