



Spatial location data intelligence that reveals the story of your site

Instantly analyze land, environmental, parcel, and infrastructure data in one cloud-based map to make confident, context-rich siting decisions



Purpose built for critical infrastructure and energy development

Data Center Suitability | Environmental Permitting | Solar Site Suitability | Wind Energy Development | Battery Storage Locations
Electric Transmission Site Selection | Pipeline Corridor Siting

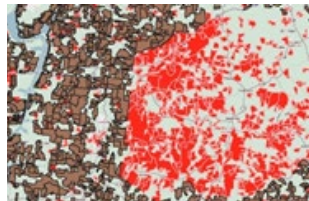


When you are unsure where to build or when you have selected a location but need deeper insight, Pivvot delivers instant location clarity. Our cloud-based spatial analytics platform pulls together land, environmental, parcel, soil, jurisdictional, and topographic data from hundreds of verified sources, giving you immediate visibility into site risks and opportunities.

Instead of spending weeks gathering, validating, and analyzing data from disconnected systems, **Pivvot empowers your team to identify sites in minutes**, not weeks, so you can move to planning and construction sooner.

Key capabilities

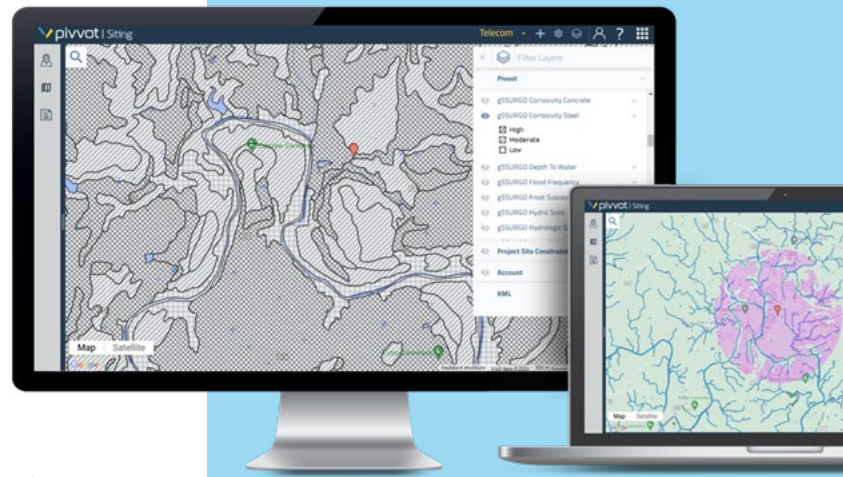
- Access curated datasets, including parcel ownership, infrastructure, wetlands, floodplains, soils, species habitat, and more
- Plan and evaluate access roads, constraints, and alternative locations with our simple Site Sketch tool
- Set project criteria to identify sites by acreage and proximity to existing infrastructure
- Evaluate multiple layouts side-by-side to determine the best buildable option
- Quickly quantify and visualize usable area across dozens of potential sites
- Smart Parcel tool shows parcels adjacent and nearby to your site that are owned by the same landowner to prepare for potential purchase negotiations
- Export landowner contact lists to expedite landowner outreach and negotiations
- Users can upload their own assets or access curated data layers through an interactive, cloud-based map



Smart Parcels – example shows parcels 200 acres or greater owned by the same entity

KEY

- Tax map parcels 200 acres or greater
- Areas less than 200 acres
- Smart Parcels (merged tax map parcels owned by the same entity that combined is 200 acres or greater)



WHY TEAMS CHOOSE PIVVOT

- **Eliminates hours of manual data collection**
- **Every dataset is validated, normalized, and refreshed using automated update schedules**
- **Visualizes land and environmental constraints**
- **Accelerates siting decisions**
- **Reduces permitting risk early**
- **Saves money on unnecessary field visits**



Why Pivvot? A smarter, faster path to actionable plans

Pivvot eliminates the manual, error-prone siting process and replaces it with a streamlined, desktop digital experience. With intuitive tools, curated data layers, and automated reporting, teams can evaluate land feasibility, uncover risks, and compare alternatives faster than ever before.

Visualize every data layer in minutes instead of weeks

Set project criteria, like acreage, environmental exclusions, setbacks, easements, and proximity to transmission lines, to immediately surface the most suitable areas.

Understand true usable acreage—not just the outline

Pivvot calculates usable area with razor precision, applying renewable-specific constraints so you know exactly how much land can be developed.

Accelerate land research with one detailed source

No more searching multiple data tools and databases to find the parcel, property owner, boundaries, assessed values, access constraints, or nearby hazards. Using our Smart Parcel tool inside of Pivvot, you can instantly view parcel boundaries, ownership, APNs, tax data, and assessed values; identify encumbrances, easements, setbacks, access constraints, and nearby hazards; create contact lists, summaries, and due diligence packets; and prioritize parcels using suitability scoring and custom criteria.

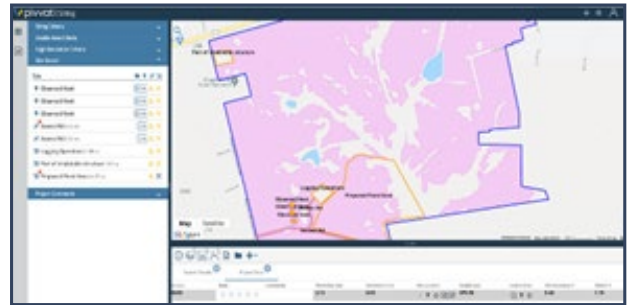
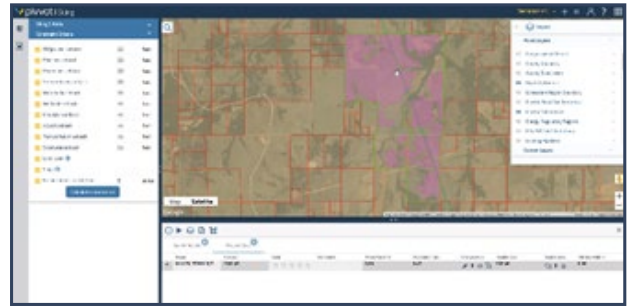
Avoid project roadblocks before they cost you

Hidden issues can derail a project: access limitations, hydric soils, land conflicts, and environmental red flags. Pivvot helps you identify and mitigate them early.

- Identify terrain issues with high-resolution slope and soil data
- Visualize wetlands, floodplains, species habitat, setbacks, easements, and infrastructure in a single view
- Easily spot parcels owned by the same landowner for possible access road solutions
- Export landowner lists to accelerate outreach and negotiations

With Pivvot, all the information you need to evaluate a site is finally in one place.

By seeing the full picture: risks, constraints, access, and potential, you can make clearer, faster, and more defensible siting decisions. The result: fewer surprises, stronger project outcomes, and speed that sets you apart.



IMPROVE EVERY PROJECT PHASE

- **Feasibility:** Quickly test multiple locations
- **Planning:** Generate constraints maps instantly
- **Permitting:** Know surface environmental risks early
- **Land:** Identify owners & export contact lists
- **Engineering:** Import data packages into design tools



pivvot.com | 816.859.5131 | info@pivvot.com